

Appendix 1 Finance

The UK Trust accounts are published on our website; see www.kenyacinic.org, or on the Charity Commission website under Charity number 1008375 ; K&D 61:1 Trust.

What we would like to do here is to give you an indication of the costs of running the Simbiri Clinic; show where the money comes from and how it is spent.

During the year ending 31st March 2013, total expenditure at the Clinic was about £93,000, and £38,000 (40%) of that came from the UK Trust, and £14, 000 (15%) from Kenyan Government.

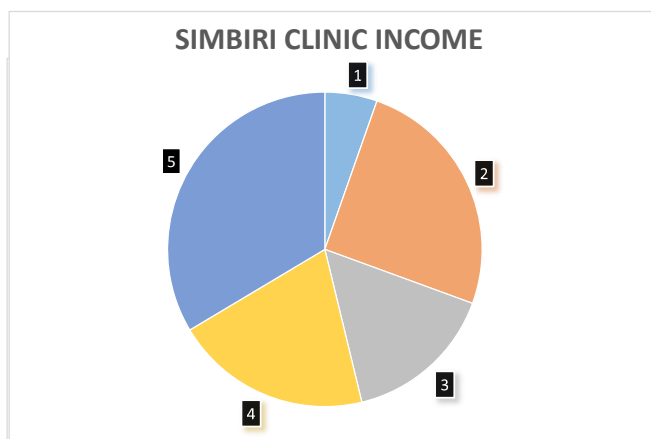
Summary figures for year ending 31st March 2014 are as follows.

All figures have been converted at average exchange rates and rounded to nearest £100.

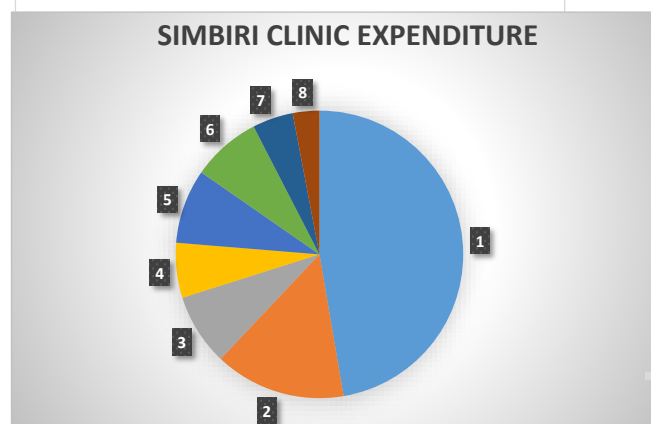
Clinic Income	£	
Opening Balance	5,400	(1)
UK Trust	25,300	(2)
Clinic Fees etc	15,700	(3)
Govt Treatment Fees	20,300	(4)
Income Generation Projects	33,700	(5)
TOTAL	100,400	

Income generation projects include

- mortuary services including making coffins
- café
- use of vehicle



Clinic Expenditure	£	
Salaries/wages	47,500	(1)
Clinic	14,800	(2)
Generator	8,100	(3)
Mortuary	6,200	(4)
Vehicles	8,400	(5)
Clinic kitchen and café	7,800	(6)
Miscellaneous	4,600	(7)
Capital Projects	3,000	(8)
TOTAL	100,400	



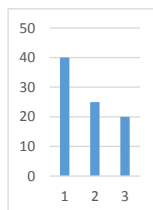
Capital Project expenditure was as follows:-

Water tank and guttering - £1000; Solar panels - £325; café extension - £430; Oxygen Concentrator - £1245

Clinic expenditure figures for April to October 2014 show that the UK Trust contribution has been reduced to about 20% so far this year, and the Government contribution to costs has increased to 35%

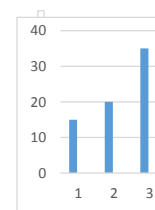
UK Trust Contribution

Year	Period	Contribution (%)
Year to March 2013	(1)	40
Year to March 2014	(2)	25
April to October 2014	(3)	20



Kenya Govt. Contribution

Year	Period	Contribution (%)
Year to March 2013	(1)	15
Year to March 2014	(2)	20
April to October 2014	(3)	35



The trend is therefore very encouraging, and going in the right direction. Thank you for your support.

file; simbircharts2104new